

A close-up photograph of a person's hand working on a complex electronic circuit board. The board is densely packed with various components, including capacitors, resistors, and integrated circuits. The background is a blurred industrial environment, likely a factory or assembly line, with blue and yellow elements. The overall image has a halftone or dot-matrix texture.

# “Keeping the lights on”

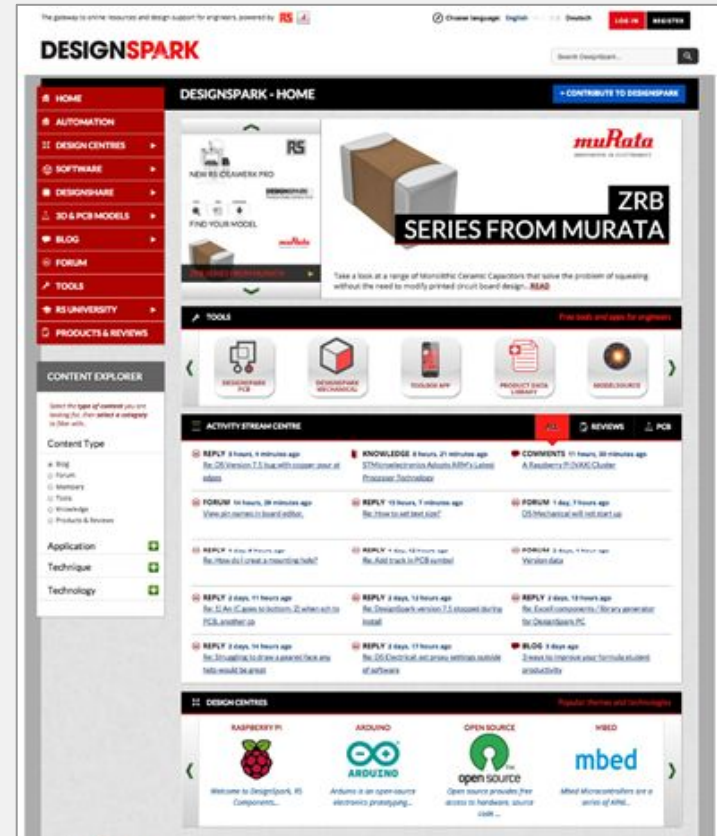
How RS Components tackled the challenge of legacy tech

RS Components is the world's **leading high-service distributor** of electronics, automation and control components, tools and consumables, serving over **1 million customers**



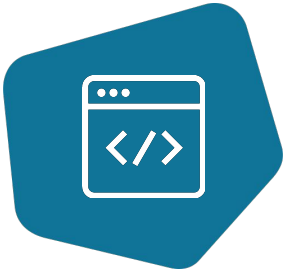
# About DesignSpark

- RS Components' online community of engineers
- Over 605,000 members worldwide
- Providing valuable, industry-leading information and tools
- Plan to expand offering and grow community to over 1 million members



Previous DesignSpark home page

# Challenges



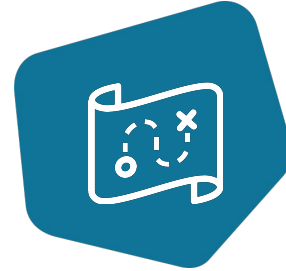
## Technical Foundation

High levels of instability within existing sites, threatening reliability



## User Experience & Design

A lack of internal UX&D expertise, presenting a potential barrier to the delivery of an exceptional customer experience



## Future Roadmap

Uncertainty around whether to keep the two sites separate or combine them into a single platform

# DS Electronics

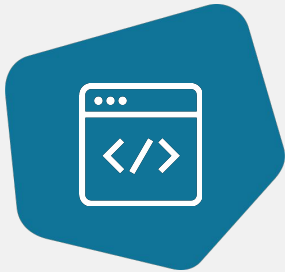


# DS Automation

DesignSpark's legacy platform, aimed at electronic engineers

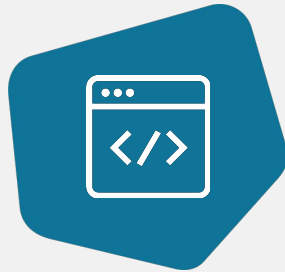
Secondary site (built internally), aimed specifically at design and panel builders

# Defining the 'as-is' situation



## **DS Automation Code Review**

Review of DS Automation codebase with detailed findings and recommendations



## **DS Electronics Code Review**

Review of DS Electronics codebase with detailed findings and recommendations



## **Architecture Review**

Review of DS Auto and DS Elec server architecture with findings and recommendations



## **UX Review**

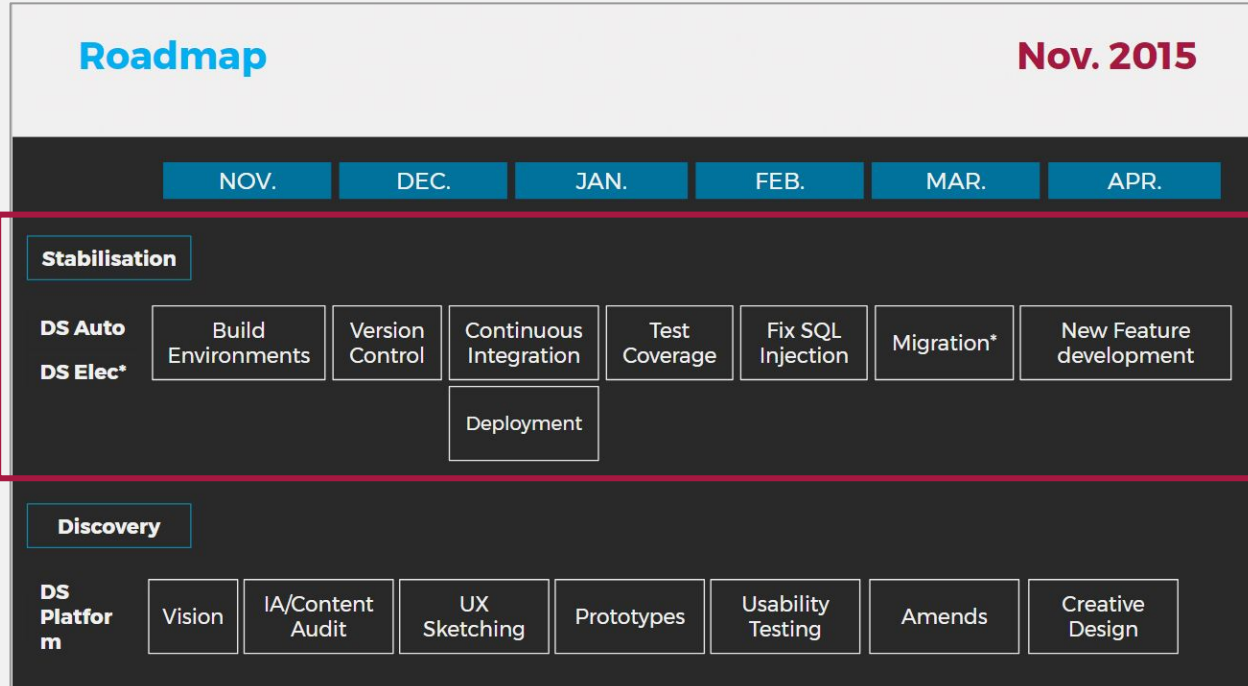
UX review of DesignSpark covering layout, navigation, interaction, content and visual design with findings and recommendations

An aerial photograph of a large stadium under construction. The stadium's seating bowl is filled with red seats. The roof structure is a complex steel truss system, with several cranes visible on the roof. The field is green, and there are several large, white, rectangular structures on the field, possibly for lighting or ventilation. The text "Choosing the right approach" is overlaid in white on the image.

# Choosing the right approach

Image credit: Mike Pennington

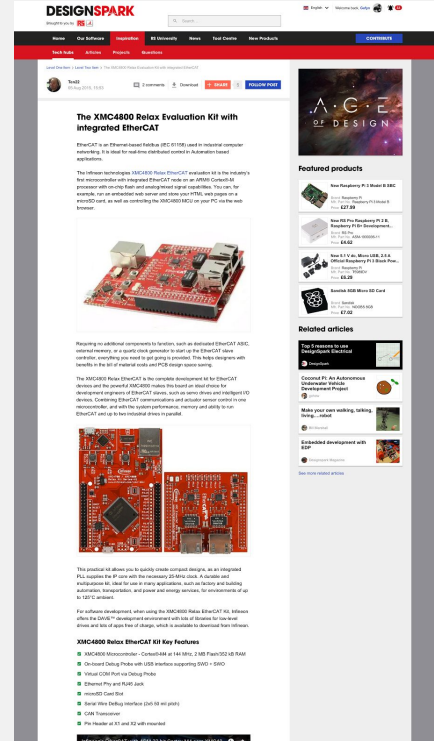
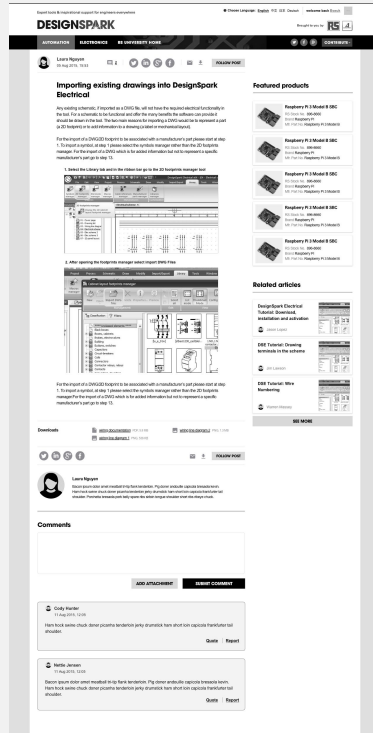
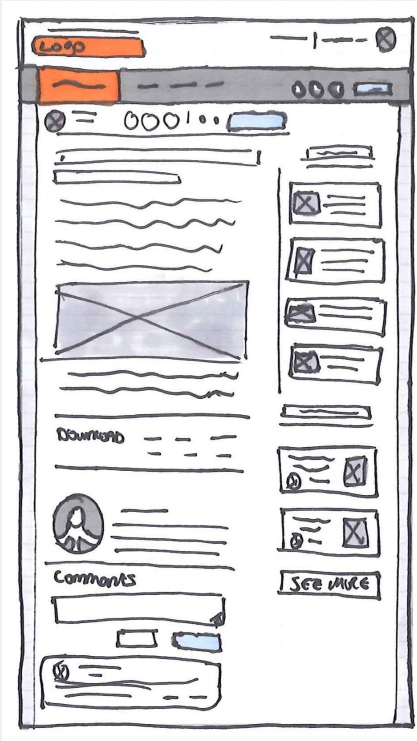
# Stabilising what's there...





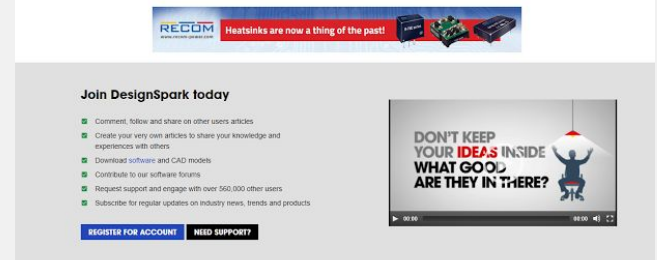
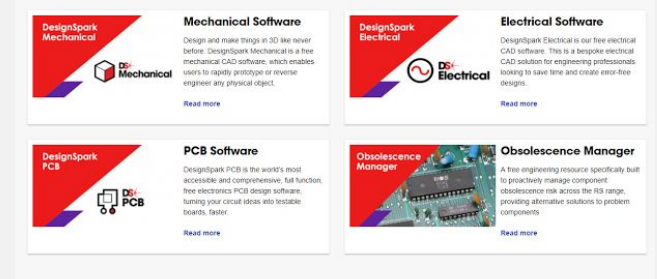
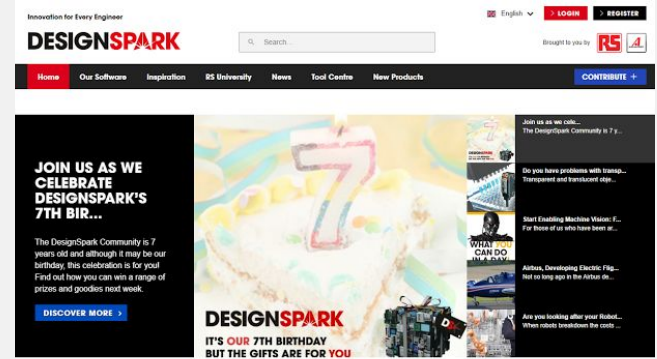


# Collaborative, iterative user-centred design



# Results

- New DesignSpark platform **successfully launched** September 2016
- **Community benefits:** consistent, cohesive experience
- **Strategic benefits:** putting RS Components front-of-mind for subsequent purchases
- **Cultural benefits:** DesignSpark team seen as innovation leaders



**Sound familiar?**

**Thank you!**

**[www.rs-online.com/designspark](http://www.rs-online.com/designspark)**



**@RSComponents**  
**@DesignSparkRS**